

# HOW IT WORKS

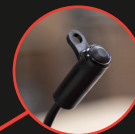


## Dr. Jekyll & Mr. Hyde® THE EXHAUST



### Blackbox

The control unit for non-canbus motorcycles. It can read signals of the motorcycle, responds to the modeswitch and controls the servomotors.



### Modeswitch

Push it to control your exhaust system. Choose your riding mode.



### The Exhaust

Reacting on the servomotors our patented valve system will be positioned in the required mode.

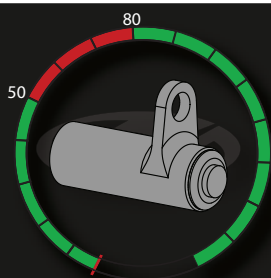


### Servomotors

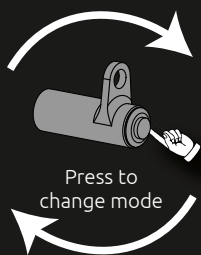
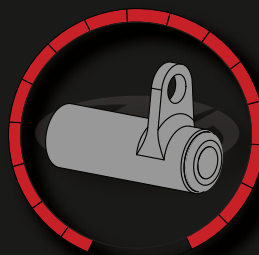
These will react to the signal of the Blackbox and position the valve in the required mode.

## EXPLANATION OF THE MODES

### Automatic mode



### Closed mode



Press to change mode

### Automatic Mode:

The valve will be controlled by the motor management and will only close when needed.

The valve will automatically be closed at standstill in neutral gear and between 50km/h and 80km/h.

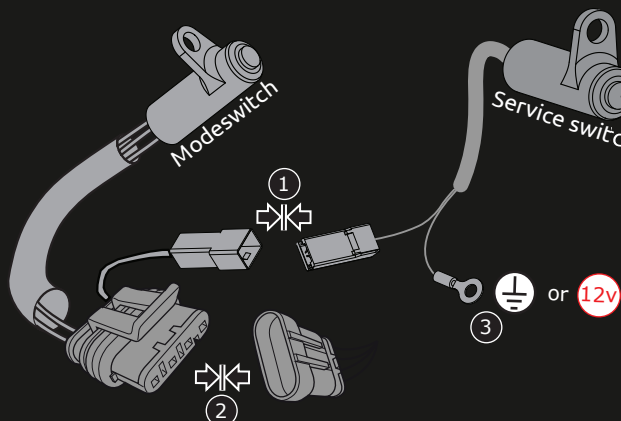
### Closed Mode:

Valve is closed at all speeds and at standstill.

## SYSTEM CHECK



THIS MODE IS FOR SERVICE PURPOSES ONLY  
AND NOT FOR USE ON PUBLIC ROADS



Press & hold service switch for 2 seconds to open valve\*

Repeat to close valve\*



\*every press changes the rotational direction